

# DIN-8SW8-I

## DIN Rail High-Voltage Switch with Digital Inputs

The DIN-8SW8-I is an 8-channel lighting control module designed to support non-dimmable lighting and fan switching. In addition, the DIN-8SW8-I features eight isolated digital inputs, allowing standard momentary switches to trigger events with or without a control system. A single model supports both 120 and 220-240 Volt applications. Each channel handles incandescent loads up to 10 Amps, fluorescent loads up to 5 Amps, and 1/2 HP motor loads.<sup>[1]</sup>

### Override Input

An override input is provided to allow an external contact closure to momentarily override the control system program and set each channel output to its override preset state. States can be set and saved locally from the front panel or remotely via software.

### Isolated Local Inputs

The DIN-8SW8-I provides eight isolated local inputs, allowing momentary pushbutton keypads to be used. By default, a momentary voltage applied to each input will cause the associated relay to toggle on/off. In addition, the attached Crestron® control system can override this behavior and create eight general-purpose inputs. In this mode, pushbutton keypads can be programmed to provide customized functionality.

### DIN Rail Installation

The DIN-8SW8-I is designed to snap onto a standard DIN rail for installation in a wall-mount enclosure. Wiring connections are made using screw terminals positioned along the top and bottom of the unit, clearly accessible from the front for easy installation and servicing. All setup controls and indicators are positioned on the center front panel. When installed in an enclosure utilizing 45 mm cutouts, the DIN-8SW8-I's front panel stays accessible while the connections are concealed.



### Crestron®

The DIN-8SW8-I communicates with a Crestron control system via the Cresnet control network. A pair of Cresnet ports is provided on the DIN-8SW8-I for easy daisy-chaining of several DIN Rail Series automation control modules.

## SPECIFICATIONS

### Load Ratings

Switch Channels: 8

Maximum Per Channel: 10 Amps incandescent, 5 Amps fluorescent, 0.5 HP at 120 to 240 Volts AC, 50/60 Hz; 5 Amps at 30 Volts DC;

Module Total: 80 Amps incandescent, 40 Amps fluorescent at 120 to 240 Volts AC, 50/60 Hz

Load Types <sup>[1]</sup>

### Connections

1 - 8: (8) Sets of (2) captive screw terminals;

Isolated Class 1 SPST relay switch circuits 1 - 8;

Relay Rating: 10 Amps incandescent, 5 Amps fluorescent, 16 Amps resistive, 0.5 HP at 240 Volts AC (per channel);

INPUTS 1-8: (9) 3.5 mm detachable terminal blocks (inputs

# DIN-8SW8-I

## DIN Rail High-Voltage Switch with Digital Inputs

1-8, common);

NET: (2) 4-pin 3.5 mm detachable terminal blocks, paralleled;

OVERRIDE: (2) 2-pin 3.5 mm detachable terminal blocks, paralleled;

Sensing input for external low-voltage contact closure;

Activates override mode when a closure is present;

### Controls & Indicators

1 - 8 : (8) Red LEDs and (8) miniature pushbuttons for status indication and local control of each channel

NET ID: (2) 7-segment green LED digits and (2) miniature pushbuttons for setting Cresnet ID

SETUP: (1) Red LED and (1) recessed miniature pushbutton for enabling Setup mode and entering touch-settable ID

OVR: (1) Red LED and (1) miniature pushbutton for enabling Override mode and saving override presets

PWR: (1) Green LED, illuminates when DC power is applied to the NET port

NET: (1) Yellow LED, indicates communication with the control processor

RESET: (1) Recessed miniature pushbutton, resets internal processor

### Enclosure

Light gray polycarbonate housing with polycarbonate label overlay, UL94 V-0 rated, 35 mm DIN EN 60715 rail mount, DIN 43880 form factor for enclosures with 45 mm front panel cutout, occupies 9 DIN module spaces (162 mm)

### Power Requirements

Cresnet Power Usage: 5.4 Watts (0.23 Amps at 24 Volts DC)

### Environmental

Temperature: 32° to 104° F (0° to 40° C)

Humidity: 10% to 90% RH (non-condensing)

Heat Dissipation: 18 BTU/hr

### Dimensions

Height: 3.71 in (94 mm)

Width: 6.26 in (159 mm)

Depth: 2.35 in (60 mm)

### Weight

13.1 oz (369 g)

Notes:

1. May not be compatible with some high inrush current loads.

This product may be purchased from an authorized Crestron dealer. To find a dealer, please contact the Crestron sales representative for your area. A list of sales representatives is available online at [www.crestron.com/salesreps](http://www.crestron.com/salesreps) or by calling 800-237-2041.

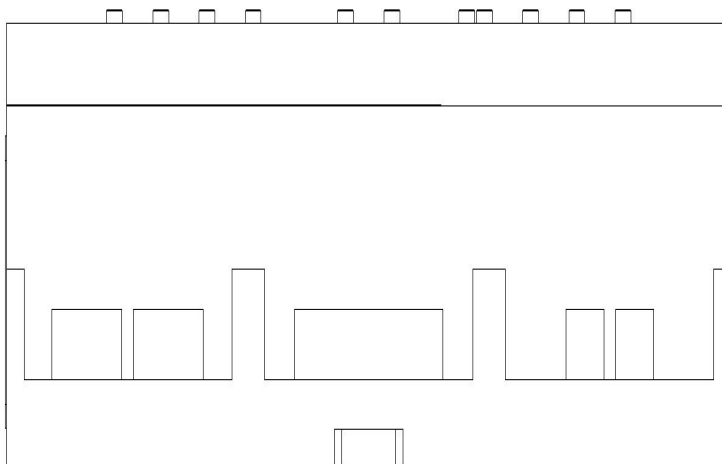
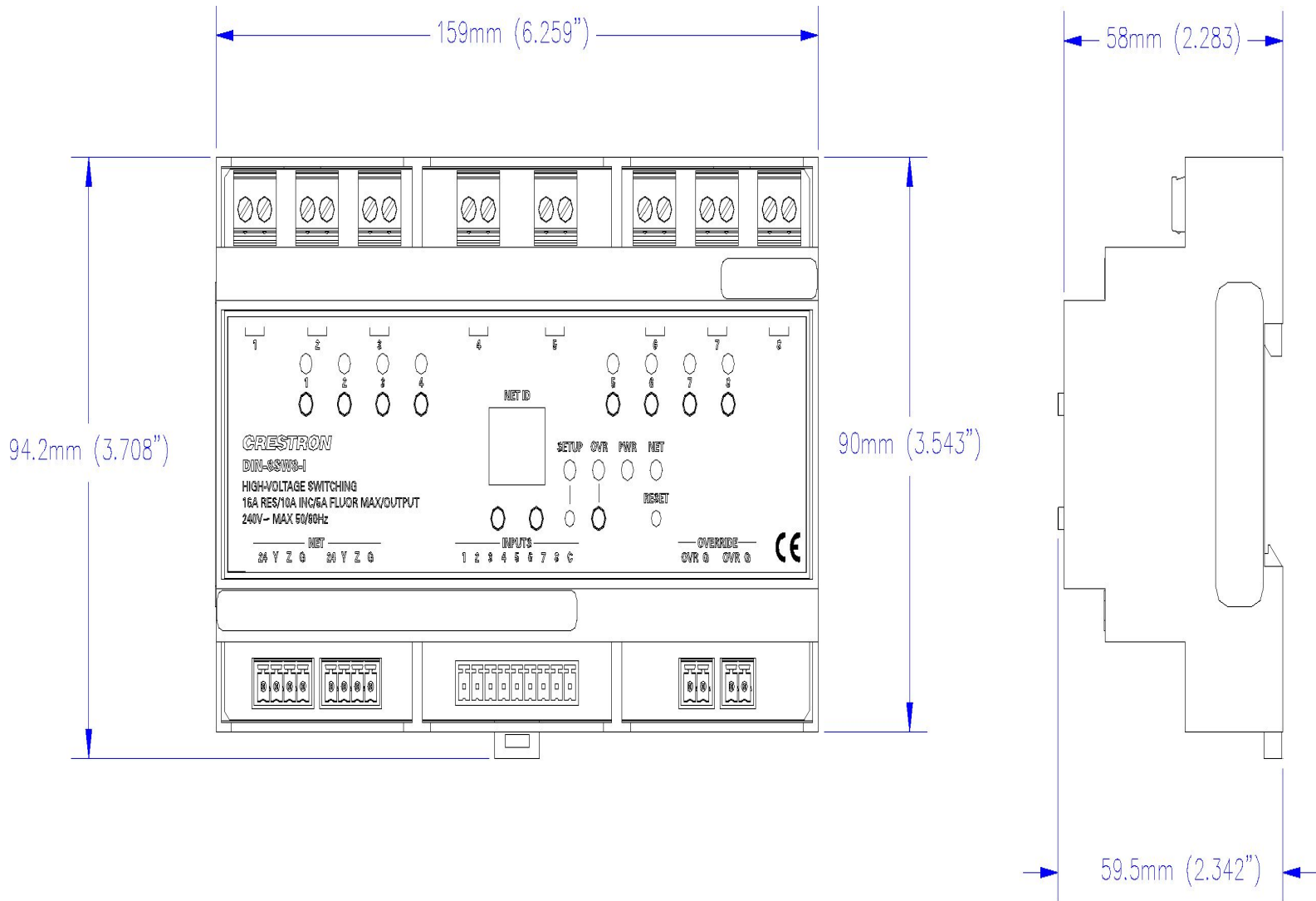
The specific patents that cover Crestron products are listed online at: [patents.crestron.com](http://patents.crestron.com).

Certain Crestron products contain open source software. For specific information, visit [www.crestron.com/opensource](http://www.crestron.com/opensource).

Crestron, the Crestron logo, and Cresnet are either trademarks or registered trademarks of Crestron Electronics, Inc. in the United States and other countries. Other trademarks, registered trademarks, and trade names may be used in this document to refer to either the entities claiming the marks and names or their products. Crestron disclaims any proprietary interest in the marks and names of others. Crestron is not responsible for errors in typography or photography. Specifications are subject to change without notice. ©2016 Crestron Electronics, Inc.

# DIN-8SW8-I

## DIN Rail High-Voltage Switch with Digital Inputs



# DIN-8SW8-I

## DIN Rail High-Voltage Switch with Digital Inputs

